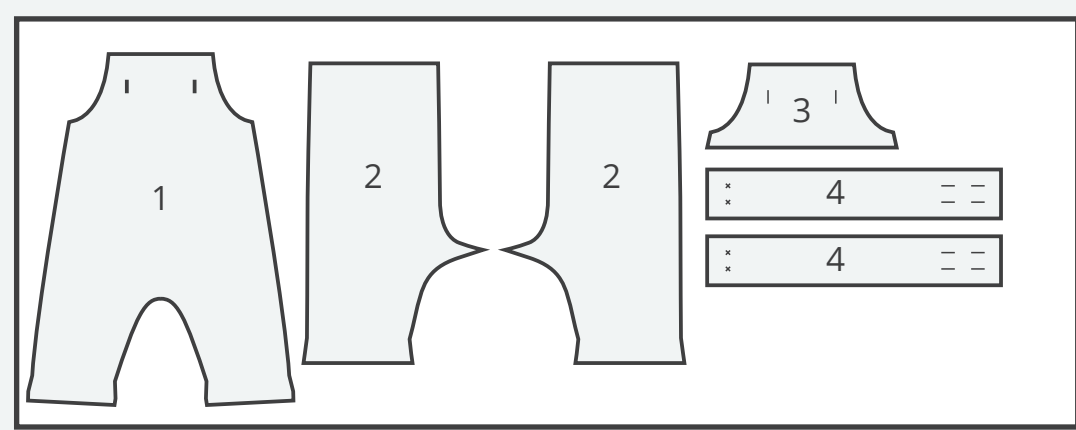
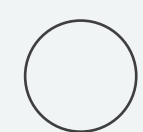


BABY OVERALL #2

CUTTING LAYOUTS AND MATERIALS



 **Fabric**
Width: 130 cm/51,2 inches
Length: 50 cm/19,7 inches

ABOUT THE PATTERN

Scale: 1:1

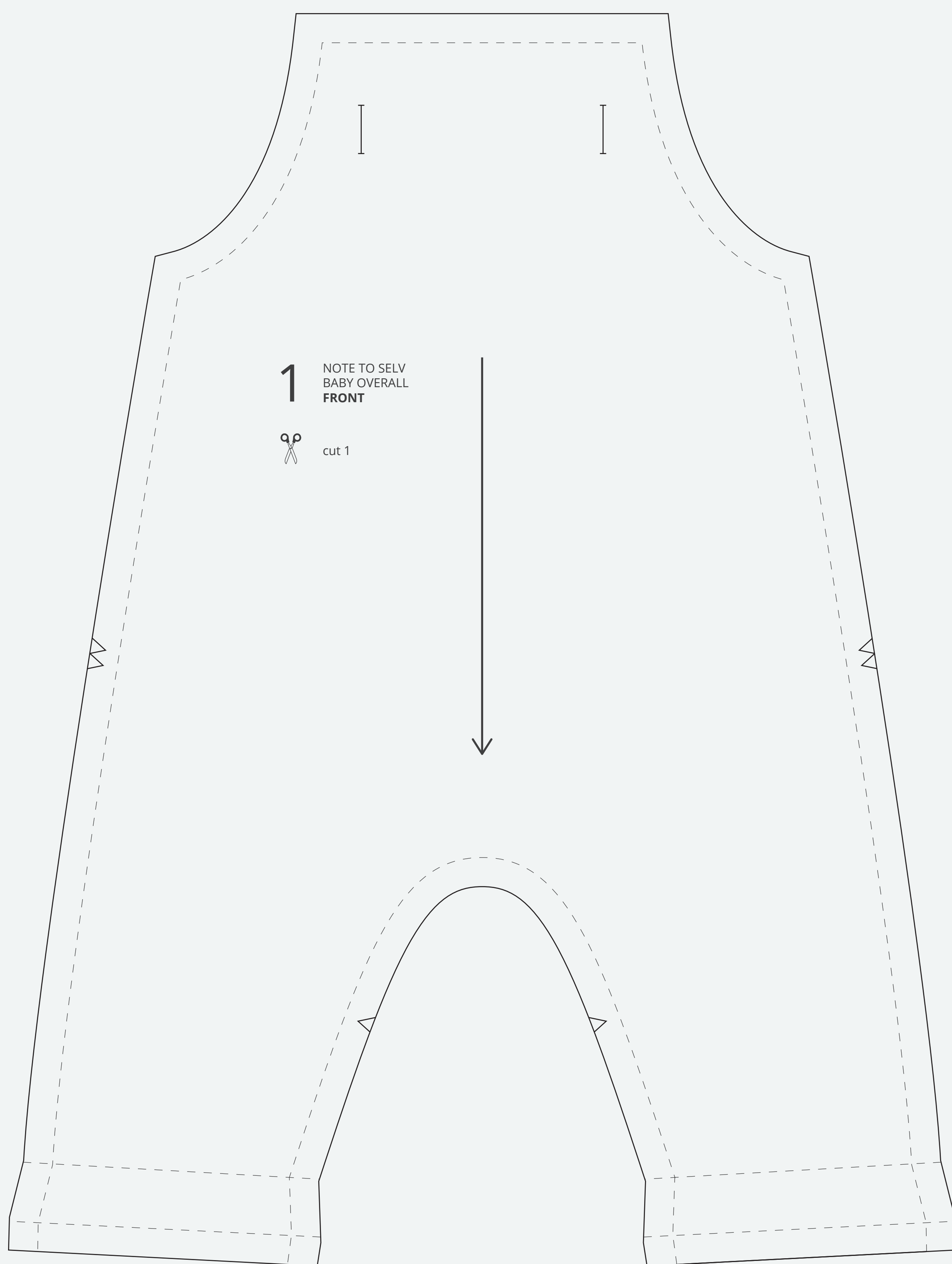
Pattern drawn by Nina Helland Sortland at ©notetosef.no. Contact notetosef.no for any issues with the pattern.

Size: 1 to 3 months

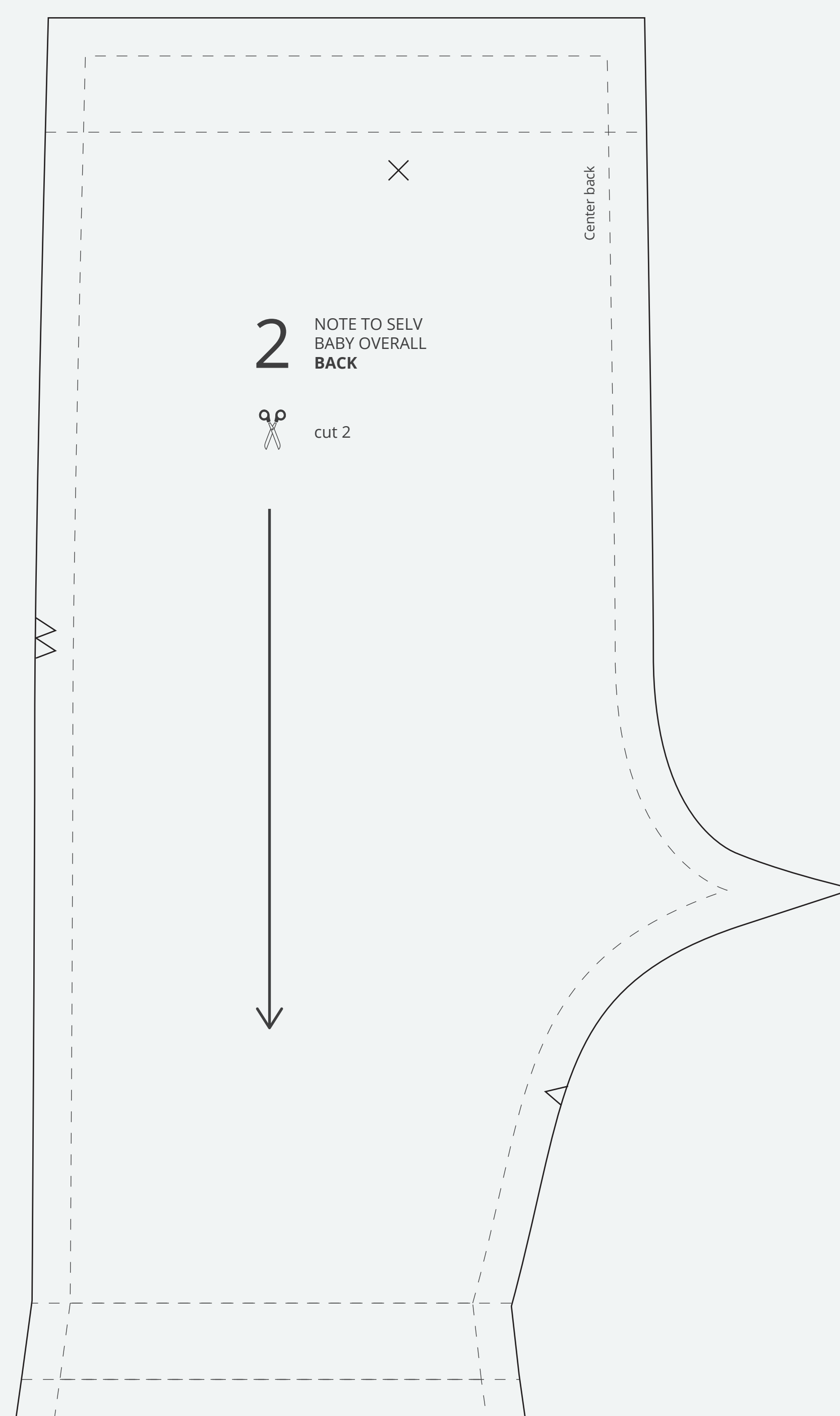
1 cm seam allowance included unless stated otherwise

Free tutorial on notetosef.no

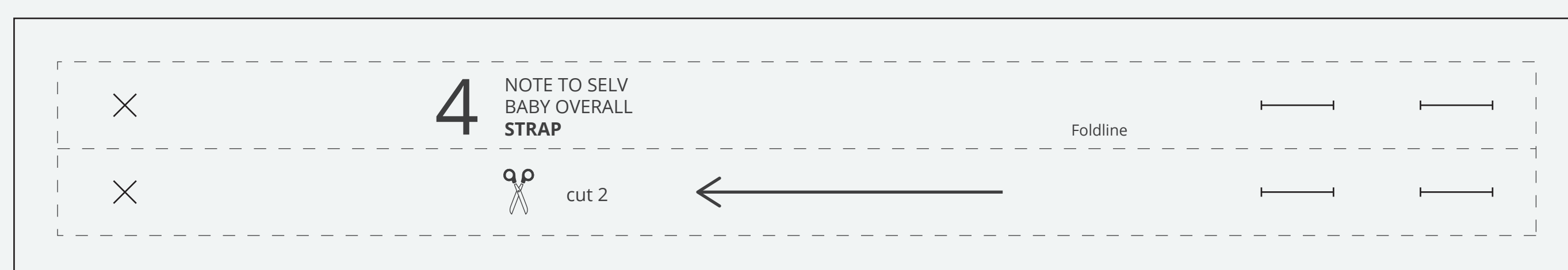
PARTS



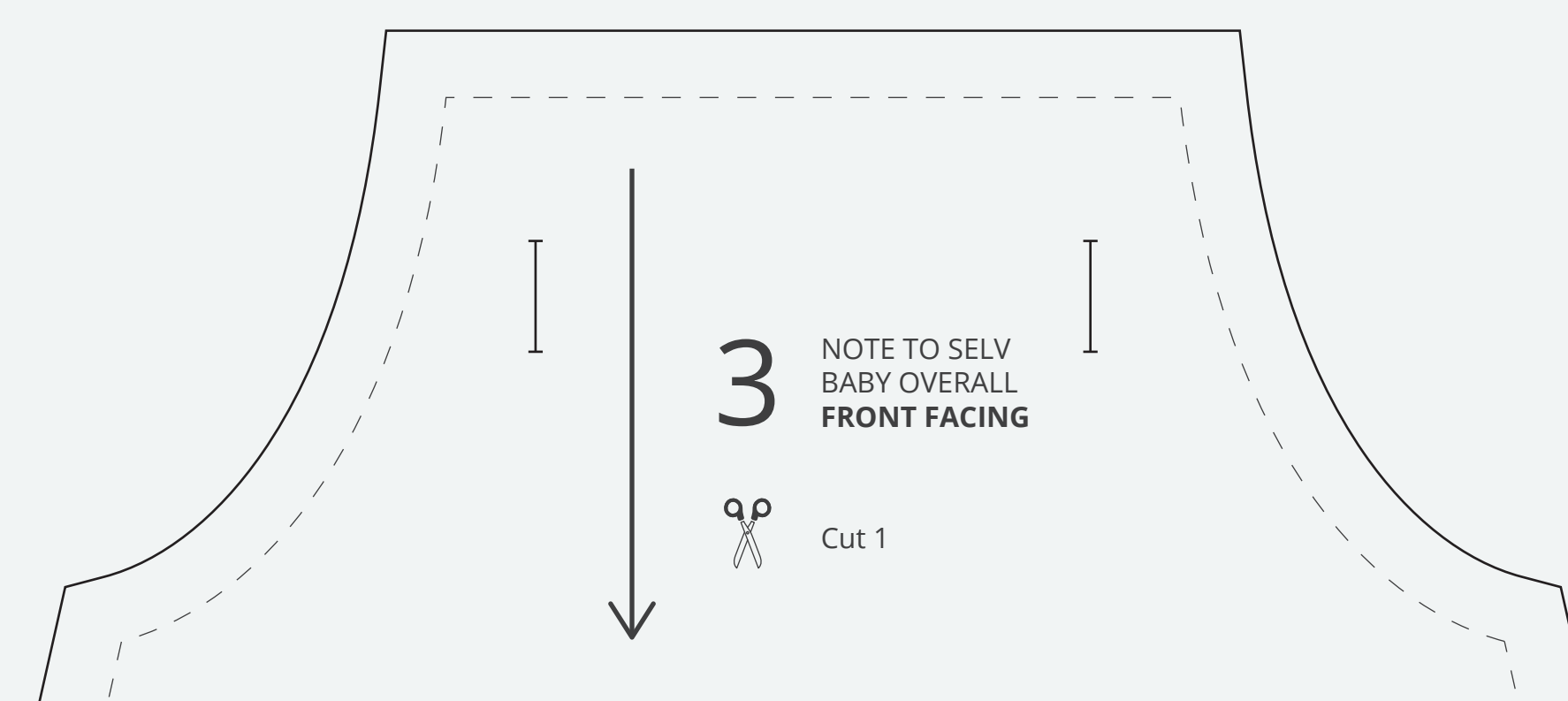
1 NOTE TO SELV
BABY OVERALL
FRONT
 cut 1



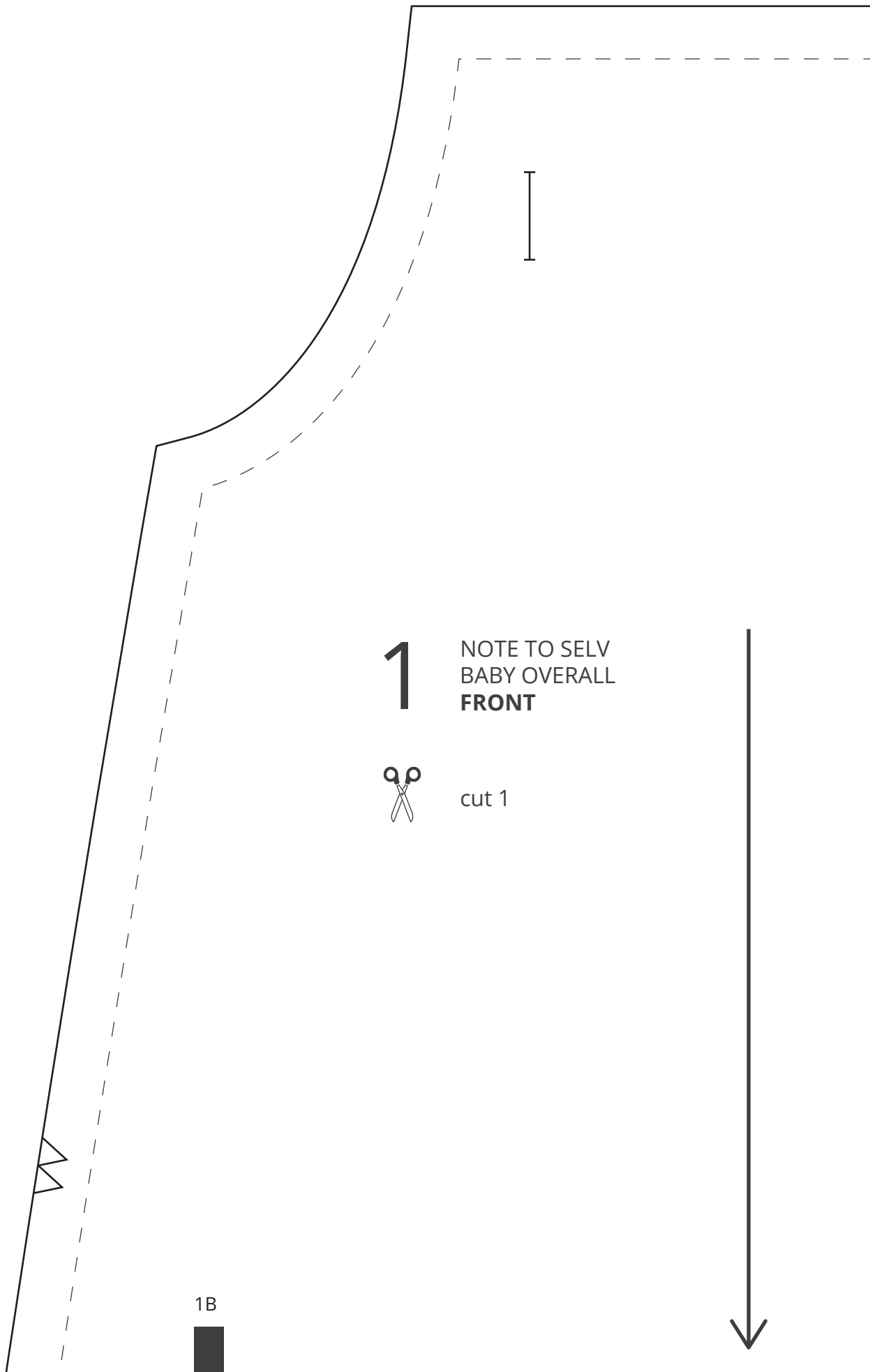
2 NOTE TO SELV
BABY OVERALL
BACK
 cut 2



4 NOTE TO SELV
BABY OVERALL
STRAP
 cut 2



3 NOTE TO SELV
BABY OVERALL
FRONT FACING
 Cut 1



1

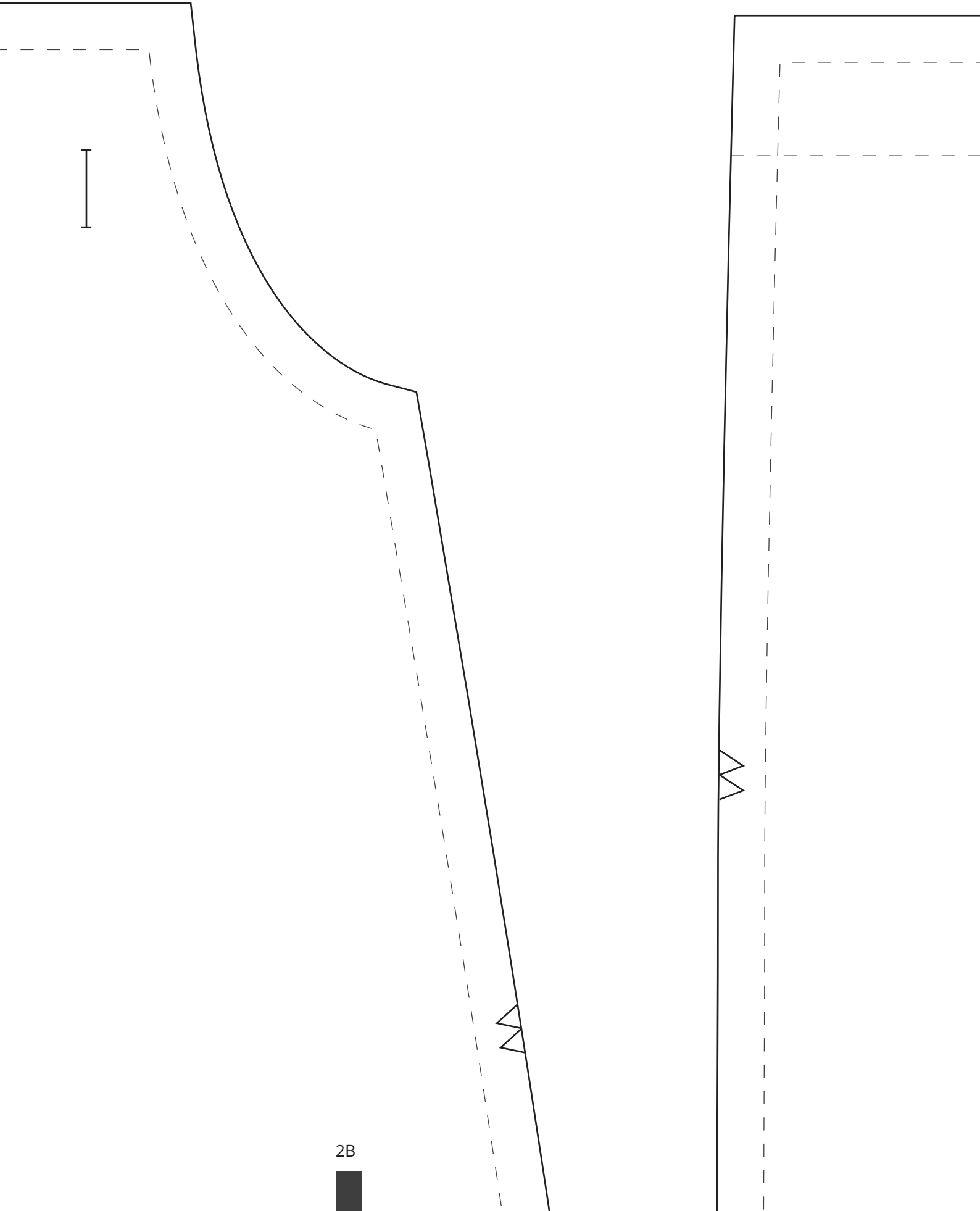
NOTE TO SELV
BABY OVERALL
FRONT



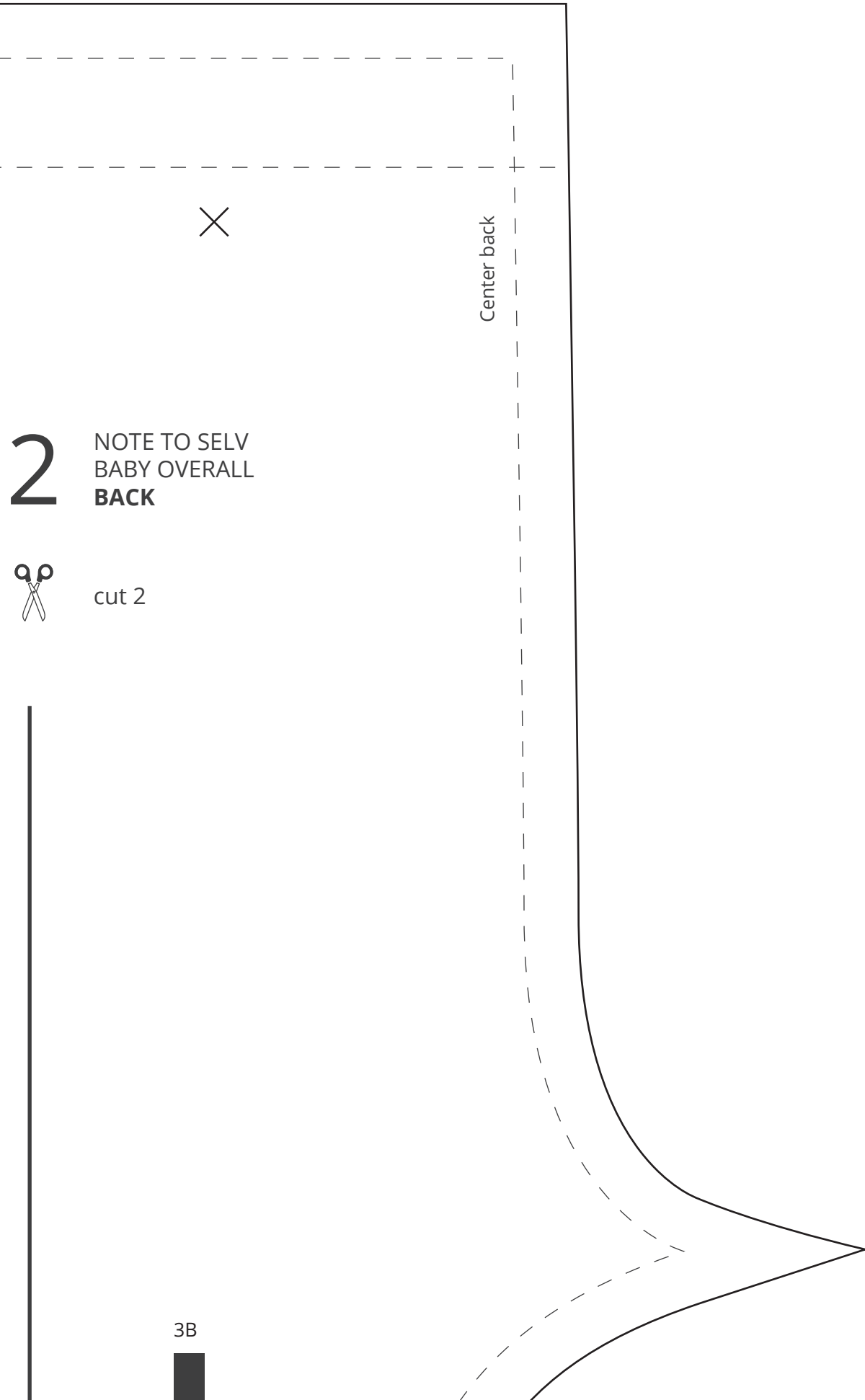
cut 1

1A

2A



2B



Center back

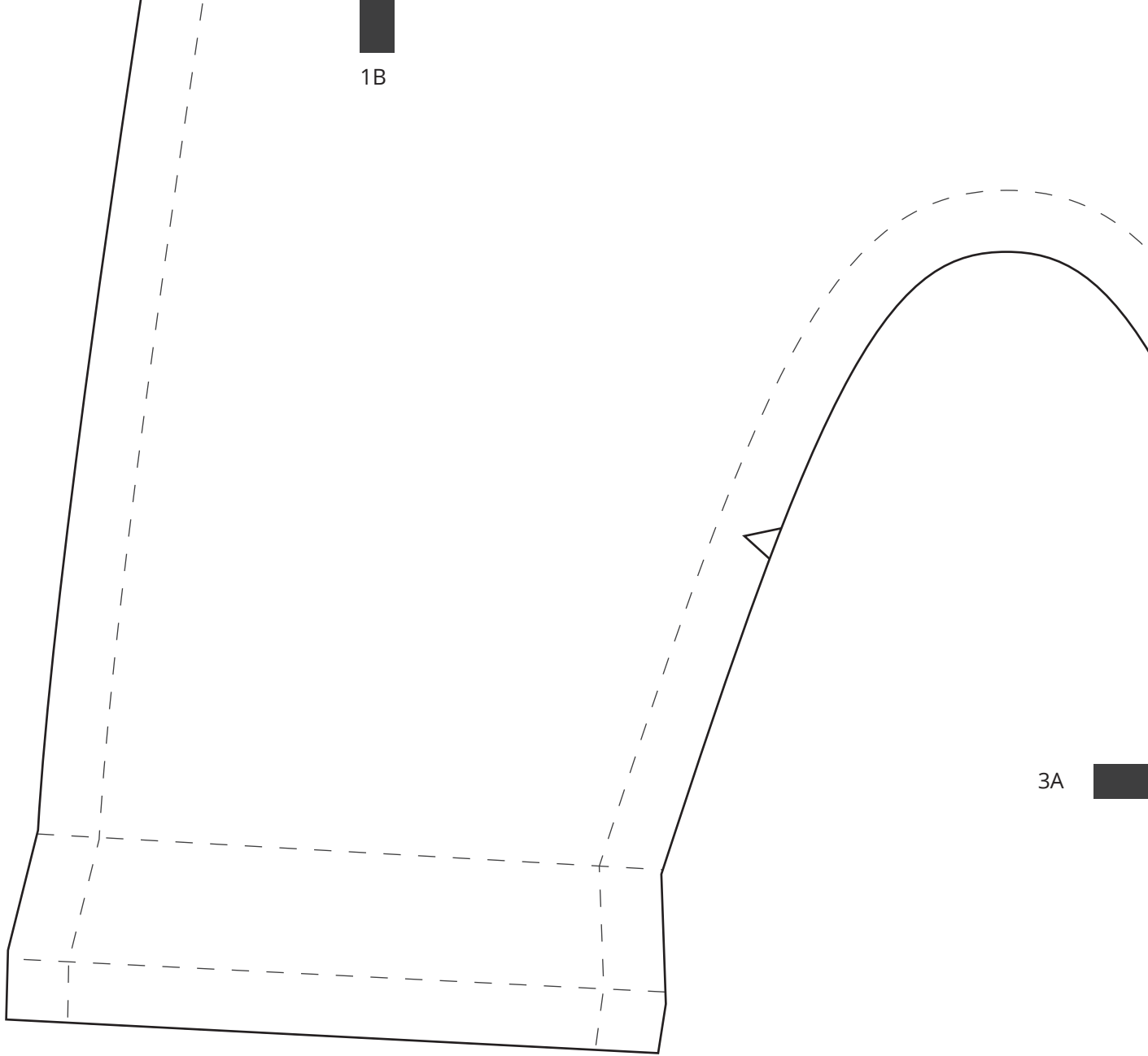
2

NOTE TO SELV
BABY OVERALL
BACK



cut 2

1B



3A



4

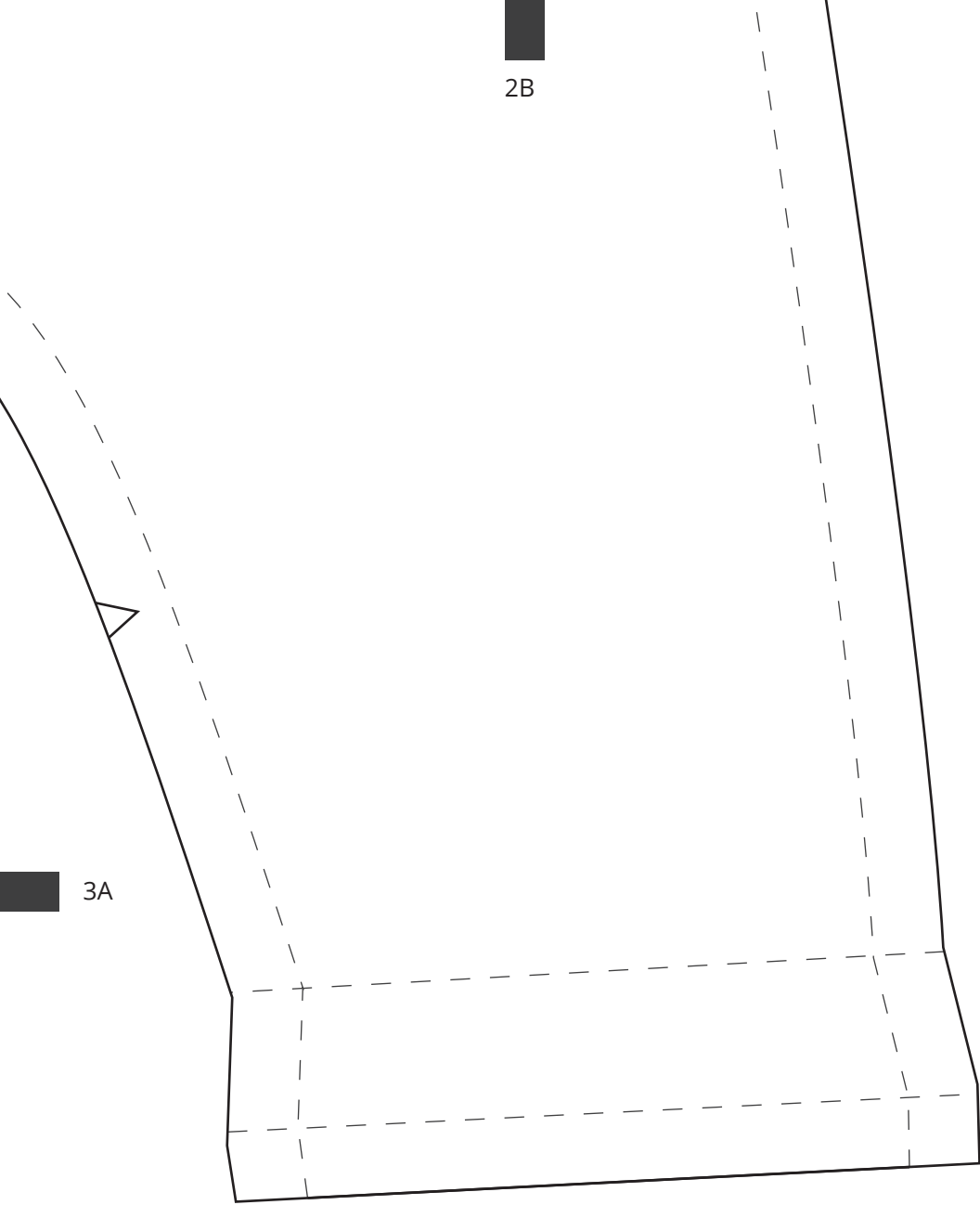
NOTE TO SELV
BABY OVERALL
STRAP



cut 2



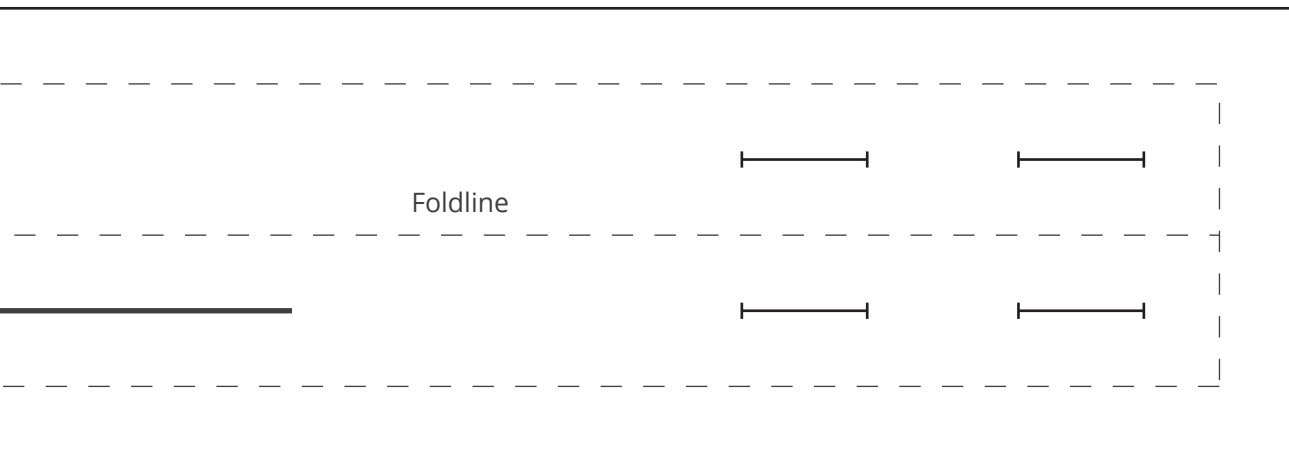
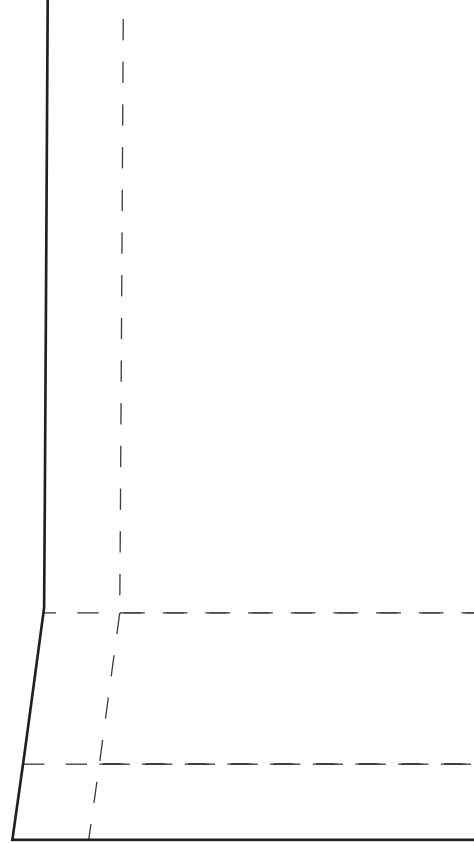
2B



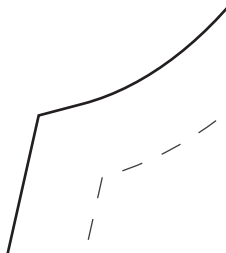
3A



4A

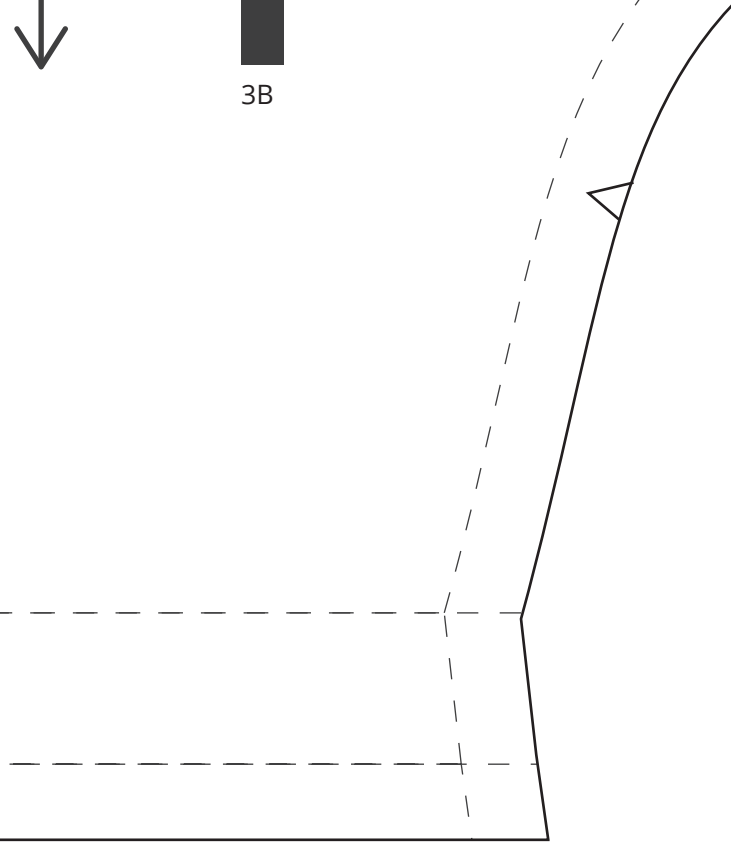


Foldline

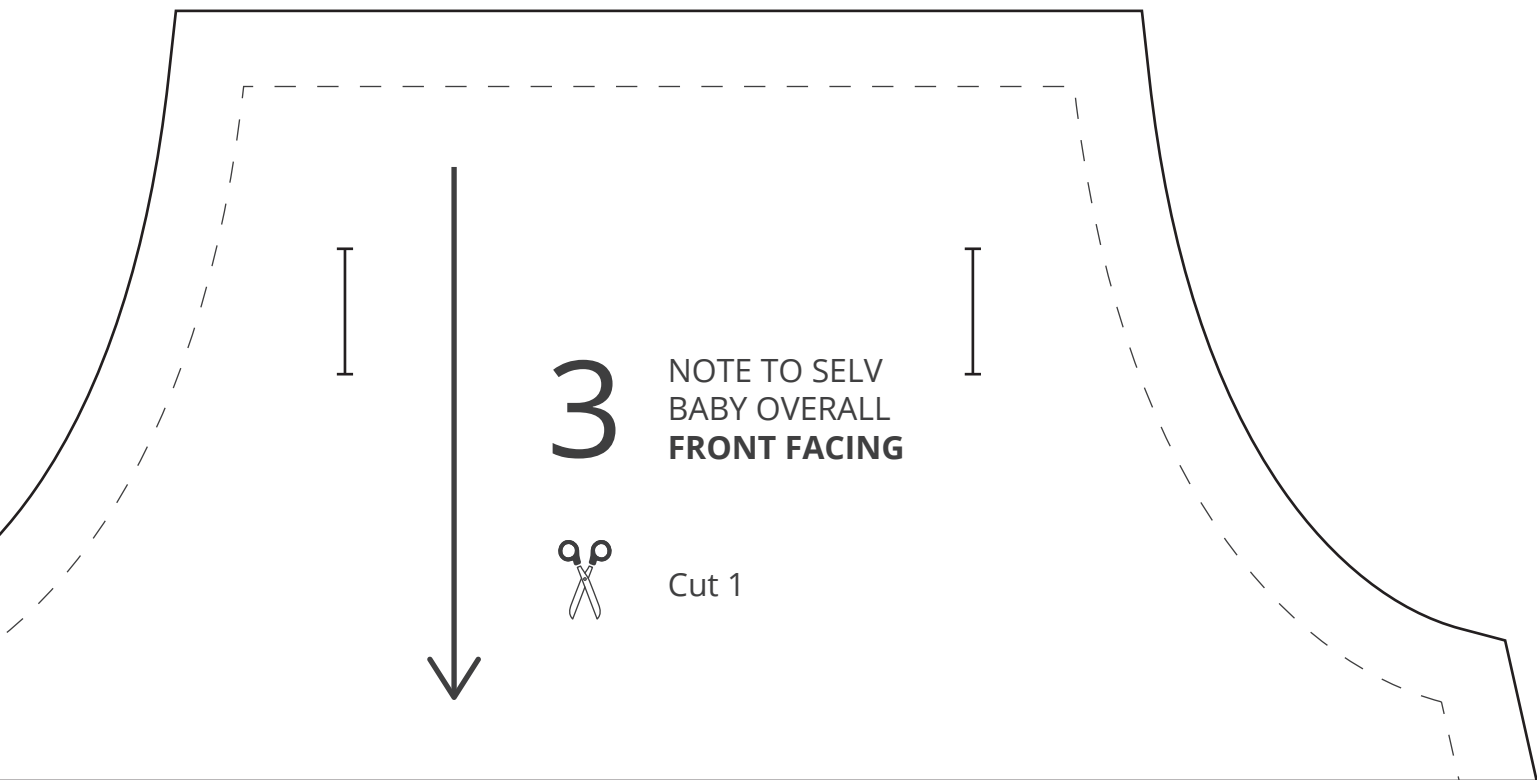




3B



4A



3

NOTE TO SELV
BABY OVERALL
FRONT FACING



Cut 1